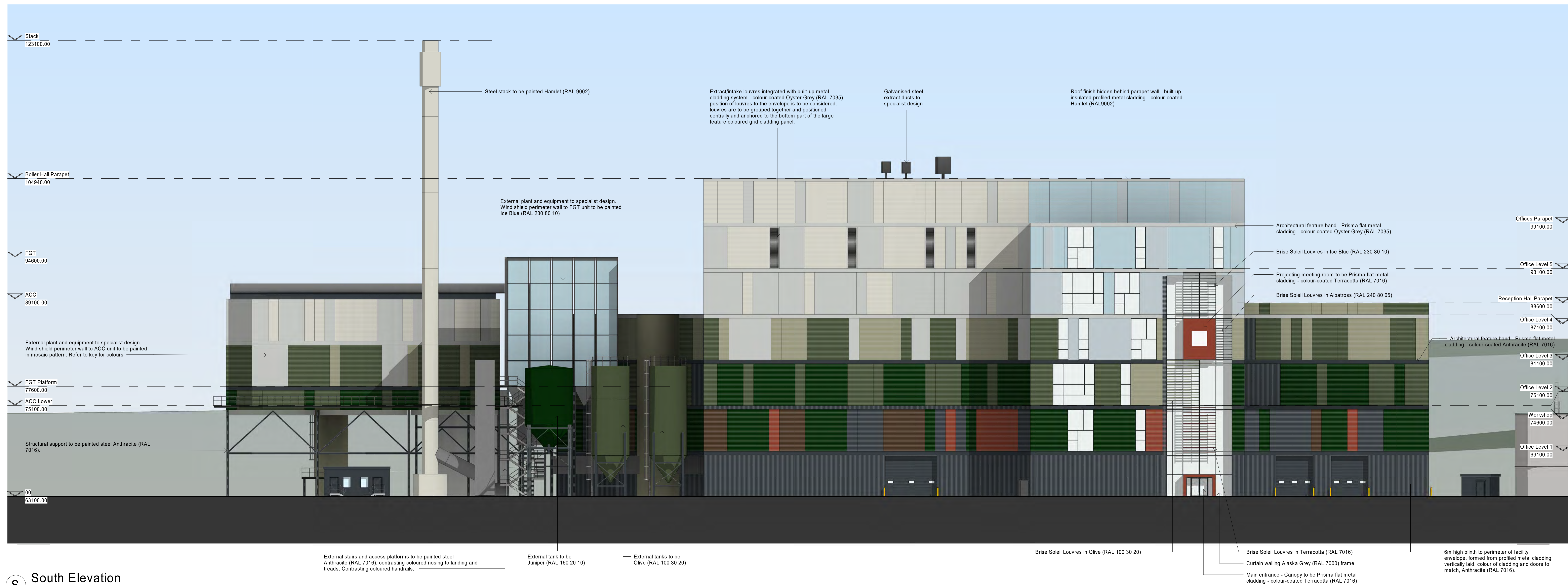














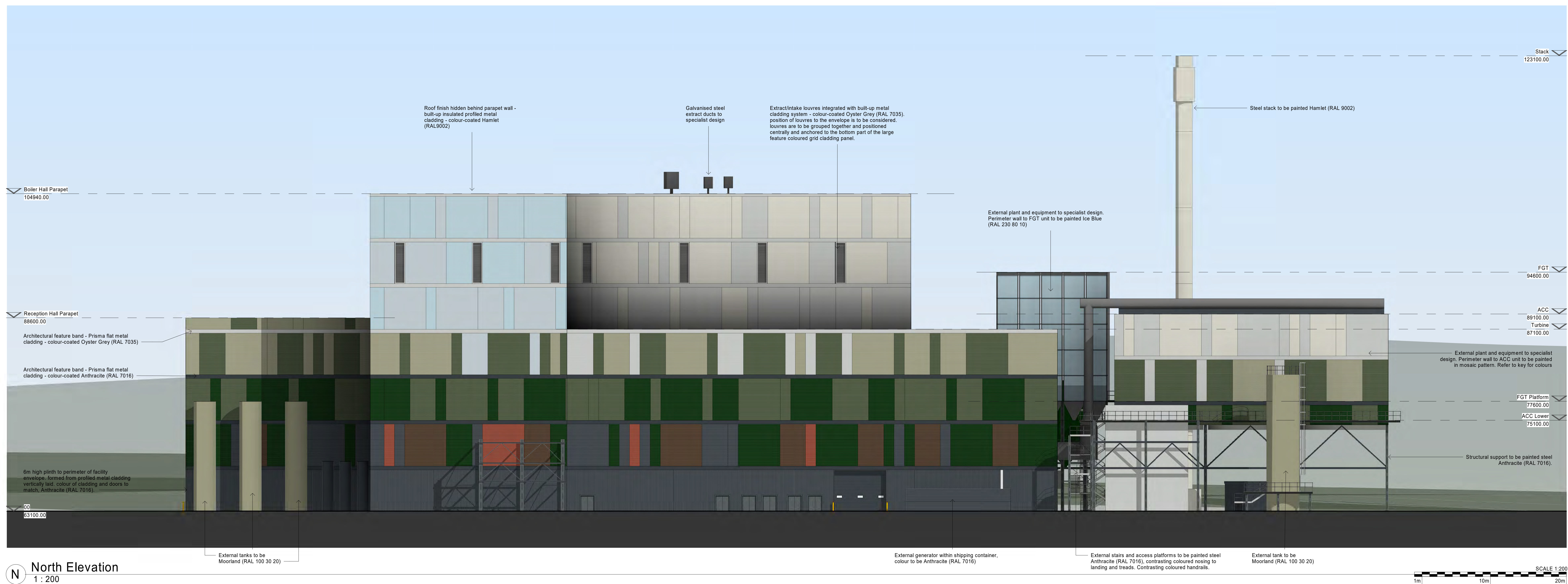
<u>Rev</u>	<u>Date</u>	<u>By</u>	<u>Description</u>
A	-	MCS	-
B	-	MCS	-
C	-	MCS	-
D	-	MCS	-
E	16/09/22	MCS	Issued for IPone



**NOTE**  
Envelope to consist of colour-coated  
profiled metal cladding system. Cladding  
profile reference, orientation and colour  
as below 'Material Key.'

### MATERIAL KEY

- |   |  |
|---|--|
|   | 32 1000R Horizontal HPS200<br>Hamlet (RAL 9002)          |
|  | 32 100R Horizontal HPS200<br>Oyster Grey (RAL 7035)      |
|  | 32 1000R Horizontal HPS200<br>Albatross (RAL 240 80 05)  |
|  | 32 1000R Horizontal HPS200<br>Van Dyke Brown(RAL 8014)   |
|  | 32 1000R Horizontal HPS200<br>Terracotta (RAL 100 40 40) |
|  | 32 1000R Horizontal HPS200<br>Mooring (RAL 100 20 20)    |
|  | 32 1000R Horizontal HPS200<br>Olive (RAL 100 30 20)      |
|  | 32 1000R Horizontal HPS200<br>Juniper (RAL 160 20 10)    |
|  | 32 1000R Horizontal HPS200<br>Ice Blue (RAL 230 80 10)   |
|  | 32 1000R Horizontal HPS200<br>Anthracite (RAL 7016)      |
|  | 32 1000R Vertical HPS200<br>Anthracite (RAL 7016)        |
|  | Prisma Flat<br>Anthracite (RAL 7016)                     |



# SGP

Architects + Masterplanners

Innovation Centre  
1 Devon Way  
Longbridge Technology Park  
Birmingham  
B31 2TS

t: +44 (0)121 222 5346

[www.stephengeorge.co.uk](http://www.stephengeorge.co.uk)

Swadlincote Resource Recovery Park  
ERF Proposal

Drawing Name:  
Proposed North & South Elevations

Drawing Stage:	<b>PLANNING</b>						
Status:	<b>\$0</b>						
SGP File Ref:	21-137-SGP-XX-ZZ-M3-A-0002						
21-137	07/06/22	MGS	RS	As	@	AD	E
SGP Project No:	Date:	Drawn:	Team:	Indicated:	131301		Rev:
Drawing Number:							
<b>21-137-SGP-XX-ZZ-DR-A-131301</b>							
Project Code	Originator	Volume Level	Type	Role	Number		